

SERIES 2901 CASEMENT WINDOW FBC PRODUCT APPROVAL DRAWINGS

NOTES:

1. THE PRODUCT ILLUSTRATED SATISFIES THE REQUIREMENTS FOR THE FLORIDA BUILDING CODE INCLUDING HVHZ.
2. THE INSTALLATION DRAWINGS DEPICTED WITHIN ARE NECESSARY TO MEET THE STRUCTURAL LOAD REQUIREMENTS. PLEASE SEE THE MANUFACTURER'S INSTALLATION INSTRUCTIONS FOR SEALING, FLASHING AND DRAINAGE REQUIREMENTS.
3. THIS PRODUCT IS IMPACT RESISTANT AND THEREFORE AN APPROVED IMPACT PROTECTION SYSTEM IS NOT REQUIRED FOR THIS PRODUCT IF IT IS INSTALLED IN A WIND BORNE DEBRIS AREA.
4. THE GLAZING FOR THESE UNITS SHALL BE AS FOLLOWS PER ASTM E 1300:
 - a. 9/16" laminated glass consisting of 1/4" heat-strengthened glass - 0.075" Solutia Vanceva PVB interlayer - 1/4" heat-strengthened glass.
 - b. 1-1/16" insulated glass consisting of an exterior 3/16" heat-strengthened glass and an interior 9/16" laminated glass consisting of 3/16" heat-strengthened glass - 0.075" Solutia Vanceva PVB interlayer - 3/16" heat-strengthened glass.
 - c. 9/16" laminated glass consisting of 1/4" heat-strengthened glass - 0.090" Solutia Saflex PVB interlayer - 1/4" heat-strengthened glass.
 - d. 1-1/16" insulated glass consisting of an exterior 3/16" heat-strengthened glass and an interior 9/16" laminated glass consisting of 3/16" heat-strengthened glass - 0.090" Solutia Saflex PVB interlayer - 3/16" heat-strengthened glass.
 - e. 1-1/4" insulated glass consisting of an exterior 1/4" heat-strengthened glass and an interior 9/16" Viracon HRG2 laminated glass consisting of 3/16" heat-strengthened glass - 0.050" polyurethane - 0.080" polycarbonate - 0.050" polyurethane - 3/16" heat-strengthened glass.
5. MAXIMUM ALLOWABLE SHIM STACK TO BE 1/4". SHIM ALL SPACES IN EXCESS OF 1/16".
6. WOOD FRAMING INSTALLATIONS ARE ASSUMED TO BE 2X S-P-F (G=0.42) OR DENSER. WOOD FRAMING SHALL BE GREATER THAN THE WINDOW FRAME WIDTH. TAPERED OR PARTIAL WOOD BUCKS ARE NOT ALLOWED. FOR INSTALLATION INTO WOOD FRAMING USE #12 WOOD SCREWS WITH SUFFICIENT LENGTH TO OBTAIN A 1-1/2" PENETRATION. ANCHORS SHALL BE LOCATED AS DESCRIBED IN THE ELEVATION DETAIL.
7. CONCRETE INSTALLATIONS ASSUME A MINIMUM COMPRESSIVE STRENGTH FOR CONCRETE OF 3,200 PSI . USE A 1/4" ITW TAPCON OR A 1/4" POWERS TAPPER ANCHOR FOR INSTALLATION INTO CONCRETE. THE ANCHOR SHALL HAVE A MINIMUM OF 1-1/4" EMBEDMENT. ANCHORS SHALL BE LOCATED AS DESCRIBED IN THE ELEVATION DETAIL.
8. METAL FRAMING INSTALLATION SHALL BE A MINIMUM OF 16 GAUGE 33 KSI STRENGTH METAL. USE A 1/4-20 GR. 2 SMS WITH SUFFICIENT LENGTH TO ACHIEVE FULL PENETRATION OF THE METAL FRAMING AND EMBED 1/4" BEYOND THE DRILL POINT.
9. CORROSIVE RESISTANT FASTENERS SHALL BE USED.
10. WINDOW FRAME MATERIAL SHALL BE EITHER 0.078" OR 0.125" THICK, 6063-T6 ALUMINUM.
11. ALLOWABLE STRESS INCREASE OF 1/3 WAS NOT USED IN THE DESIGN OF THE PRODUCT SHOWN, WIND LOAD DURATION FACTOR Cd=1.6 WAS USED FOR WOOD ANCHOR CALCULATIONS.
12. UNITS SHALL BE INSTALLED AS DESCRIBED IN THESE INSTALLATION INSTRUCTIONS AND ALSO IN CONFORMANCE TO THE MANUFACTURER'S PUBLISHED INSTALLATION INSTRUCTIONS.

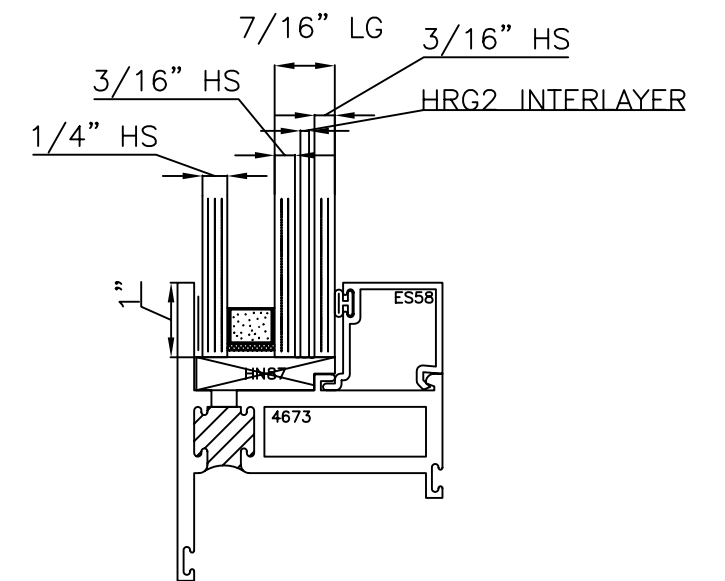
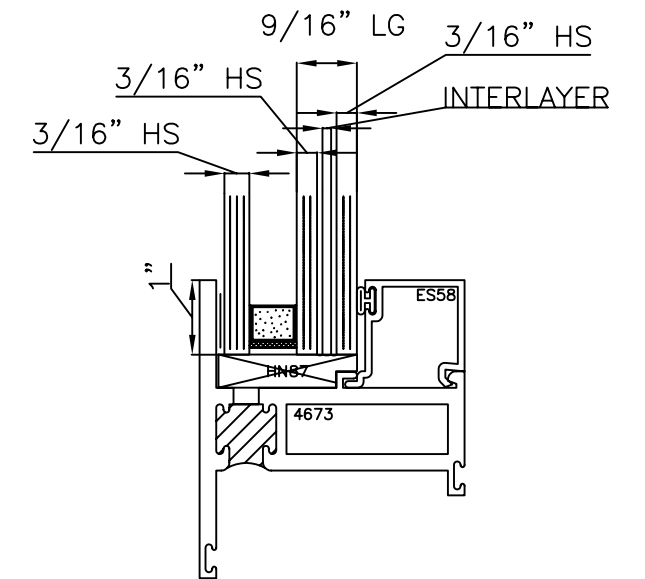
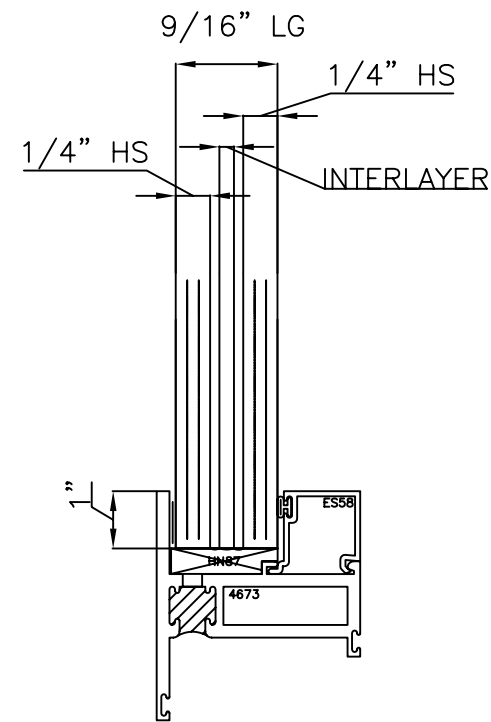
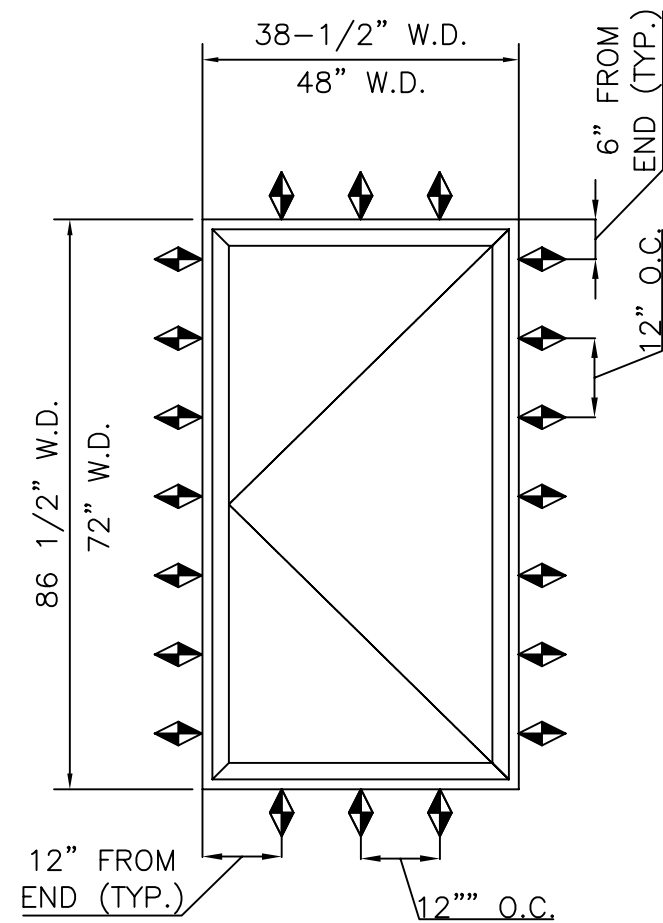
ANCHORAGE SCHEDULE AND DESCRIPTION				
SUBSTRATE	ANCHOR	EMBEDMENT	ANCHOR SPACING	EDGE DISTANCE
WOOD FRAMING	#12 WOOD SCREW	MINIMUM 1-1/2"	MINIMUM 2"	MINIMUM 2"
CONCRETE	1/4" TAPPER	MINIMUM 1-3/8"	MINIMUM 2"	MINIMUM 4"
CONCRETE	1/4" TAPCON	MINIMUM 1-1/4"	MINIMUM 2"	MINIMUM 2-1/2"
STEEL STUD	1/4-20 GR 2 SMS	MINIMUM 1"	MINIMUM 2"	MINIMUM 2"

DESIGN PRESSURE RATING	IMPACT RATING	GLAZING TYPE
+/-130.0	LARGE MISSILE IMPACT	A AND B
+/-90.0		C AND D
+100.0/-120.0		E

DRAWINGS TABLE OF CONTENTS

SHEET 1.01: INDEX TO DRAWINGS AND NOTES
 SHEET 2.01: ELEVATIONS
 SHEET 3.01: ANCHORAGE DETAILS

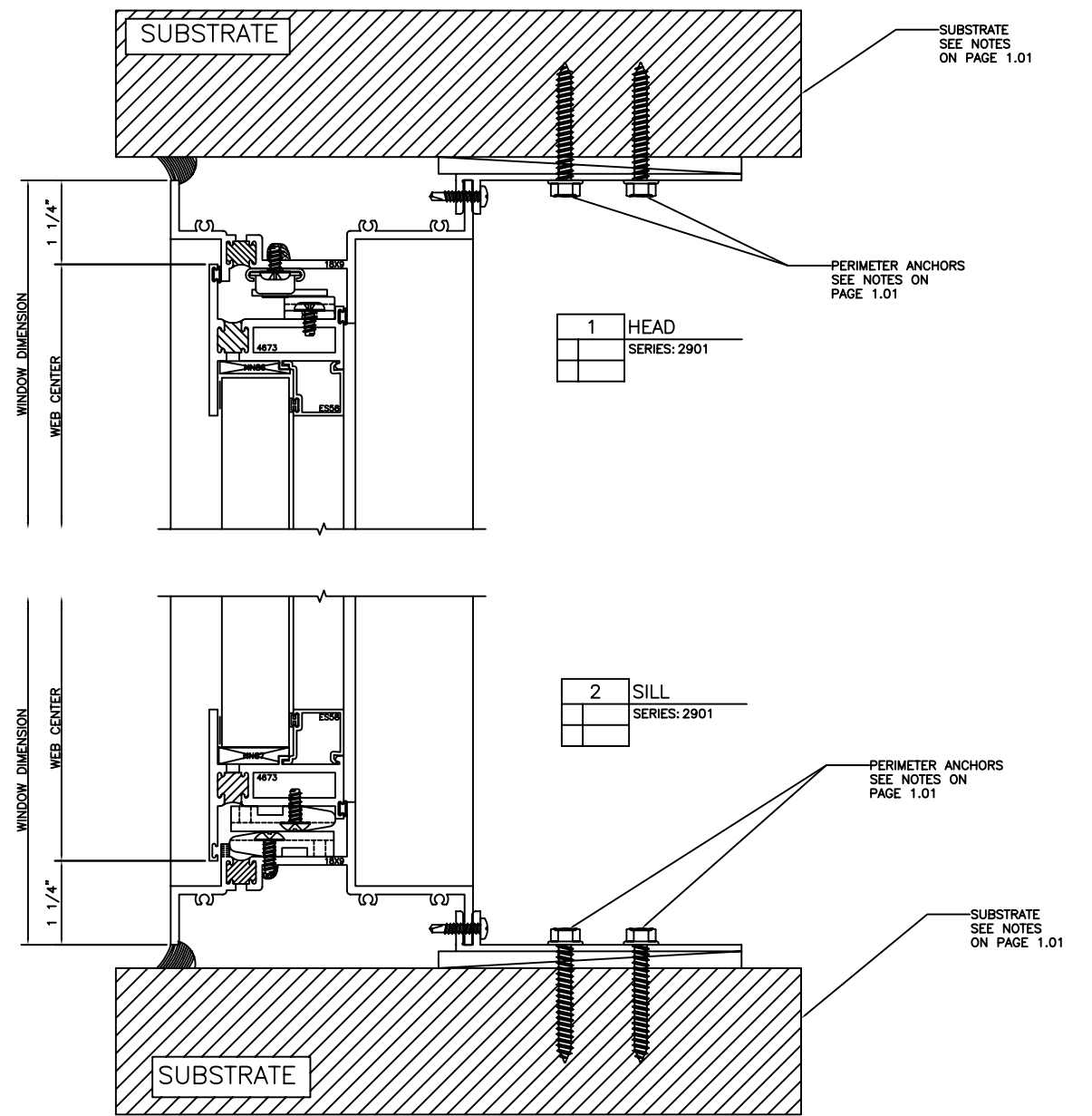
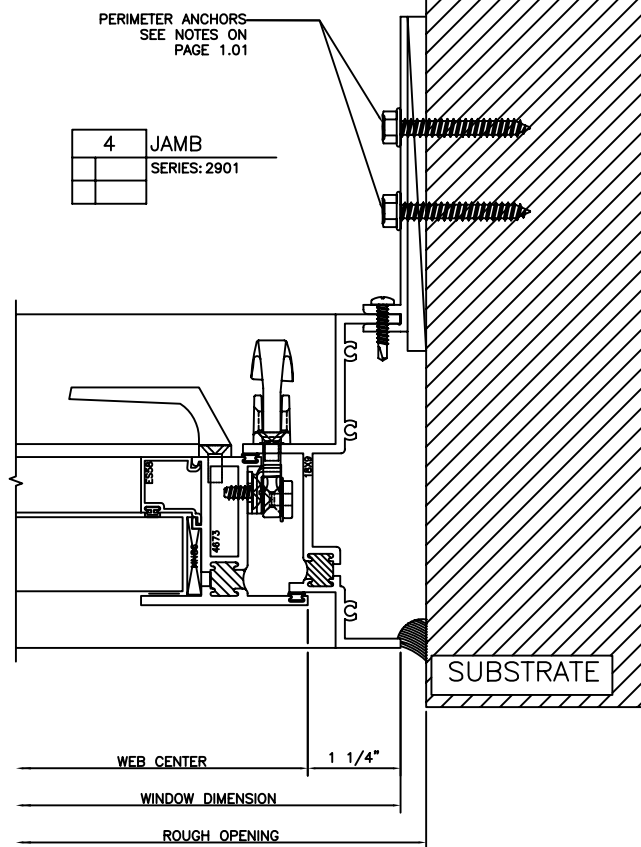
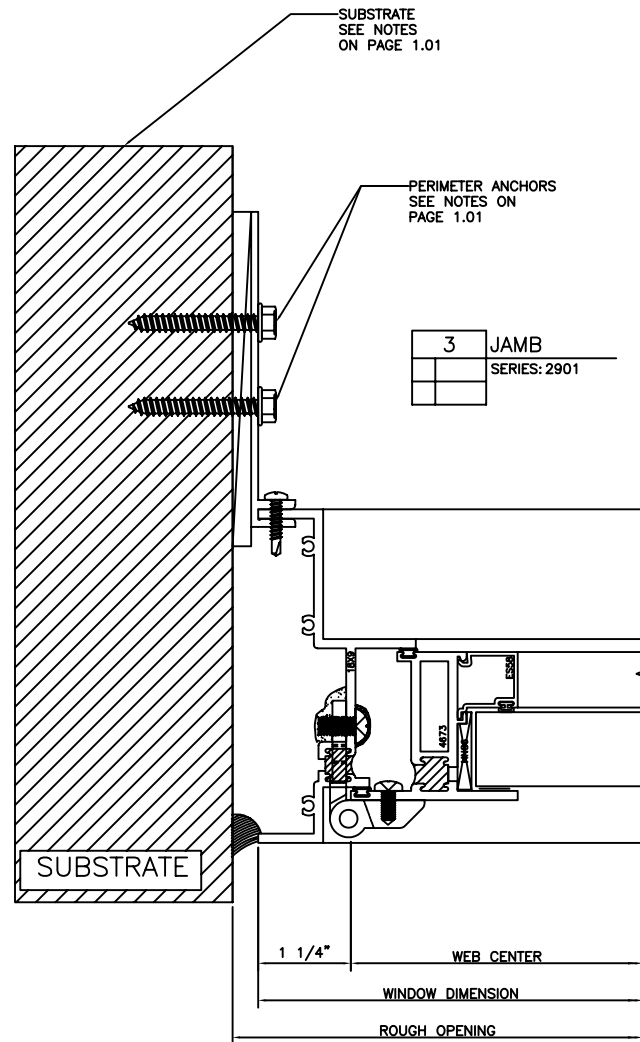
GLASS D.L.O.:
 36" X 84" (VANCEVA)
 36" X 84" (SAFLEX)
 40¹/₈" X 64¹/₈" (HRG2)



GLAZING DETAILS

DRAWN BY RAW	CHECKED BY	SCALE NTS	REV.
DATE 6-25-2009	DATE		





©2009 EFCO CORPORATION ALL RIGHTS RESERVED

DRAWN BY	RAW	CHECKED BY	SCALE	REV.
DATE	6-25-2009	DATE	NTS	



EFCO CORPORATION
1000 County Road - Monett, Missouri 65708

SERIES 2901 CASEMENT WINDOW
ANCHORAGE DETAILS

REPORT#
WE-2009-145D

SHEET
3.01